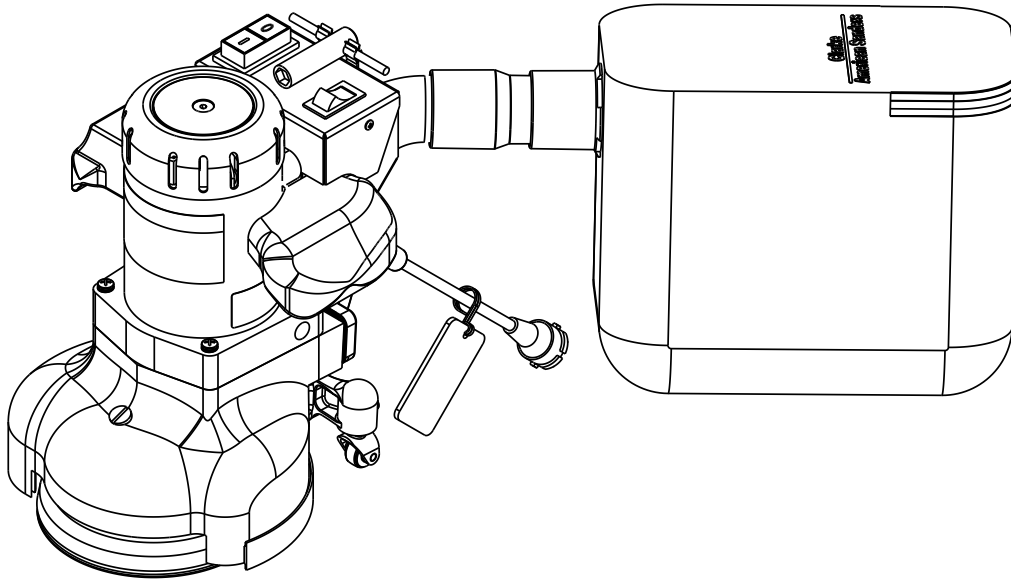

Clarke[®]

American Sanders[®]

B-2

7" Spinner Edger (CE)



Operator's Manual

MODEL: 07097A

READ THIS BOOK

This book has important information for the use and safe operation of this machine. Failure to read this book prior to operating or attempting any service or maintenance procedure to your Clarke American Sanders machine could result in injury to you or to other personnel; damage to the machine or to other property could occur as well. You must have training in the operation of this machine before using it. If your operator(s) cannot read English, have this manual explained fully before attempting to operate this machine.

Si Ud. o sus operadores no pueden leer el Inglés, se hagan explicar este manual completamente antes de tratar el manejo o servicio de esta máquina.

All directions given in this book are as seen from the operator's position at the rear of the machine.

Contents of this Book

Operator Safety Instructions.....	3
Introduction and Machine Specifications.....	5
Machine Set-Up.....	6
How to Operate the Machine.....	8
Sanding Cuts and Sandpaper	9
Maintenance	10
The Dust Control System.....	10
How to Adjust the Angle of the Sandpaper Disc to the Floor	10
How to Change Adjustment of Machine	10
How to Clean Ventilation Plug.....	10
Lubrication.....	11
How to change the Lubricant in the Gearbox.....	11
How to Check the Carbon Brushes.....	11
Lower Assy	14-15
Upper Assy	16-17
Wiring Diagram.....	18

WARNING!

The Products sold with this Manual contain or may contain chemicals that are known to certain governments (such as the State of California, as identified in its Proposition 65 Regulatory Warning Law) to cause cancer, birth defects or other reproductive harm. In certain locations (including the State of California) purchasers of these Products that place them in service at an employment job site or a publicly accessible space are required by regulation to make certain notices, warnings or disclosures regarding the chemicals that are or may be contained in the Products at or about such work sites. It is the purchaser's responsibility to know the content of, and to comply with, any laws and regulations relating to the use of these Products in such environments. The Manufacturer disclaims any responsibility to advise purchasers of any specific requirements that may be applicable to the use of the Products in such environments.

OPERATOR SAFETY INSTRUCTIONS



WARNING



AVERTISSEMENT



ADVERTENCIA

DANGER means: Severe bodily injury or death can occur to you or other personnel if the **DANGER** statements found on this machine or in this Operator's Manual are ignored or are not adhered to. Read and observe all **DANGER** statements found in this Operator's Manual and on your machine.

WARNING means: Injury can occur to you or to other personnel if the **WARNING** statements found on your machine or in this Operator's Manual are ignored or are not adhered to. Read and observe all **WARNING** statements found in this Operator's Manual and on your machine.

CAUTION means: Damage can occur to the machine or to other property if the **CAUTION** statements found on your machine or in this Operator's Manual are ignored or are not adhered to. Read and observe all **CAUTION** statements found in this Operator's Manual and on your machine.



DANGER:



Failure to read the Operator's Manual before operating or servicing this sanding equipment could result in injury to the operator or to bystanders and could cause damage to the equipment. Read and observe all safety statements found in this manual and on the sanding equipment. Make sure all labels, decals, warnings, cautions and instructions are fastened to the equipment. Replace any that are damaged or missing. You must have training in the operation of this equipment before using it. **If the operator is unable to read this manual, have it explained fully before they attempt to use this equipment.**



DANGER:



Sanding/finishing wood floors can create an environment that can be explosive. The following safety procedures must be adhered to:

- Cigarette lighters, pilot lights and any other source of ignition can create an explosion when active during a sanding session. All sources of ignition should be extinguished or removed entirely if possible from the work area.
- Work areas that are poorly ventilated can create an explosive environment when certain combustible materials are in the atmosphere, i.e., solvents, thinners, alcohol, fuels, certain finishes, wood dust and other combustible materials. Floor sanding equipment can cause flammable material and vapors to burn. Read the manufacturer's label on all chemicals used to determine combustibility. Keep the work area well ventilated.
- Spontaneous combustion or an explosion can occur when working with sanding dust. The sanding dust can self-ignite and cause injury or damage. Sanding dust should be disposed of properly. Always empty the sanding dust into a metal container that is located outside of any building(s).
- Remove the contents of the dust bag when the bag is 1/3 full. Remove the contents of the dust bag each time you finish using the equipment. Never leave a dust bag unattended with sanding dust in it.
- Do not empty the contents of the dust bag into a fire.
- Hitting a nail while sanding can cause sparks and create an explosion or fire. Always use a hammer and punch to countersink all nails before sanding floors.

**DANGER:**

Operating partially assembled sanding equipment could result in injury to the operator or bystander and could cause damage to the equipment or to other property.

- Do not operate this equipment unless it is fully assembled and all guards, doors and covers are secured.
- Keep all fasteners tight.
- Keep all adjustments within manufacturers specifications.

**DANGER:**

Moving parts on this sanding equipment can cause injury to the operator or bystanders.



- Keep hands, feet and loose clothing away from all moving parts.
- Do not change or adjust the abrasive while the sanding equipment is running.
- Do not service the sanding equipment while it is running.

**DANGER:**

This sanding equipment requires a supply of electricity. Improper use could result in electrical shock or fire.



- Connect only to an electrical source matching what is shown on the equipment nameplate.
- Do not use this sanding equipment on an ungrounded electrical circuit. Consult an electrician if you suspect the circuit is not properly grounded.
- Do not use this sanding equipment with a damaged electrical cord. Inspect before each use.
- Avoid striking the electrical cord with the abrasive. Always lift the electrical cord over the sanding equipment.
- Do not use the electrical cord to move the sanding equipment.
- Disconnect the electrical source before servicing this equipment.

**WARNING:**

Injury to the operator or bystander can occur if protective gear is not worn while sanding. Always use eye, ear, and respiratory protection while performing any sanding operation.

**WARNING:**

Bodily injury could occur if power is applied to the equipment with the power switch already in the "ON" position. Always check to assure that the power switch is in the "OFF" position before connecting power supply.

**CAUTION:**

Maintenance and repairs performed by unauthorized personnel could result in damage or injury. Maintenance and repairs performed by unauthorized personnel will void your warranty. Servicing of this unit must always be referred to an authorized Clarke American Sanders distributor.

CAUTION:

Use of this equipment to move other objects or to climb on could result in injury or damage. Do not use this equipment as a step or furniture. Do not ride on this equipment.

**CAUTION:**

Damage could occur to the equipment if not properly kept in a dry building for storage. Store the equipment in a dry building.

**CAUTION:**

Serious damage to the floor can occur if the sanding equipment is left running in one spot while the sanding disc is in contact with the floor. To avoid damage to the floor, do not dwell while lowering or raising the sanding disc. Always sand with a constant motion.



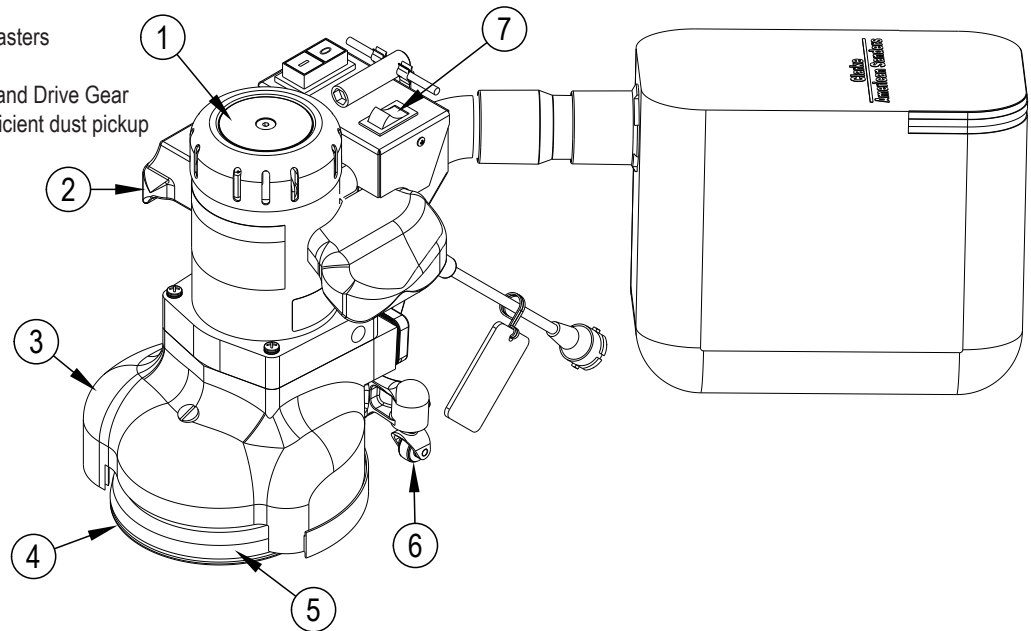
INTRODUCTION AND MACHINE SPECIFICATIONS

The B-2 is specifically designed for finishing floor edges, stairs, and other hard-to-reach surfaces. The handle location and low center of gravity make the B-2 easy to operate.

The excellent cutting power comes from a powerful universal type motor. A motor that delivers maximum performance without slowing down or overheating. Its exclusive two speed control when switched to hi-speed produces 3200 rpm for fast, rough sanding. At low speed, the B-2 operates at 2800 rpm for fine, finish sanding. A non-marking disc guard protects the rubber pad, permitting the edger to work right up to the baseboard or wall.

- 1-Powerful Universal Motor
- 2-Comfortable Operating Handles
- 3-Aluminum Alloy Casting
- 4-Balanced Sanding Disc for perfectly matched job
- 5-Non-Marking Roller Guard
- 6-Non-Marking Swivel Type Casters
- 7-High Low Switch

- *-Hardened Steel Alloy Pinon and Drive Gear
- *-Powerful Vacuum Fan for efficient dust pickup



SPECIFICATIONS

Model	07097A
Voltage / Frequency	220V-240V / 50-60Hz
Amperage	6.5
Motor	1450W (1HP)
Sound Level	91dB (A)
Vibration	14.3 m/s ² rms
Abrasive Size	178mm x 22 mm Dia. (7" x 7/8" Dia.)
Disc Rate High	3200 RPM
Disc Rate Low	2800 RPM
Gears	Hardened steel alloy pinion and drive gear.
Bearings	Sealed ball bearings, lifetime lubricated.
Dust Collector	Powerful vacuum fan, full aluminum skirt
Power Cord	12m H07RN F3G 1.5mm ²
Dimensions	356 x 260 x 343mm (14 x 10½ x 13½)
Weight	14.5 kg (32 lbs.)
Shipping Weight	21 kg. (46 lbs.)

Machine Set-up

This sanding machine is designed to be operated with a remote vacuum dust collection system or with the included dust bag.

Preparing Remote Vacuum Dust Collection Systems

To prepare the machine for remote vacuum dust collection systems that have a 2" hose end, follow this procedure:

1. Install 2" hose end (figure 1, A) directly over the exhaust tube (figure 1, B).
2. The exhaust tube can be rotated for optimum convenience.

To prepare the machine for remote vacuum dust collection systems that have a 1 ½" hose end, follow this procedure:

1. Install the 2" x 1 ½" hose end adaptor (Part No. 30563A) (figure 1, C) over the exhaust tube (figure 1, B).
2. Insert 1 ½" hose end (figure 1, D) into the adaptor (figure 1, C).

NOTE: Start the remote vacuum collection system before operation.

Preparing to use the included dust bag

To prepare the machine for use with the included dust bag (Part No. 53544B), follow this procedure:

1. Install the dust bag by pressing the end onto the exhaust tube until the ring locks into the groove (figure 2). This is best done by pressing on the back of the bag opening with the palm of your hand.
2. The exhaust tube can be rotated for optimum convenience.
3. To remove the dust bag from the exhaust tube, pry up the end of the bag opening to partially release the internal rib from the groove, then pull.
4. To empty the dust bag, unzip the disposal flap and force contents out by inverting the bag.

NOTE: For best results, empty frequently. Follow all warnings posted in this manual and on the dust bag.

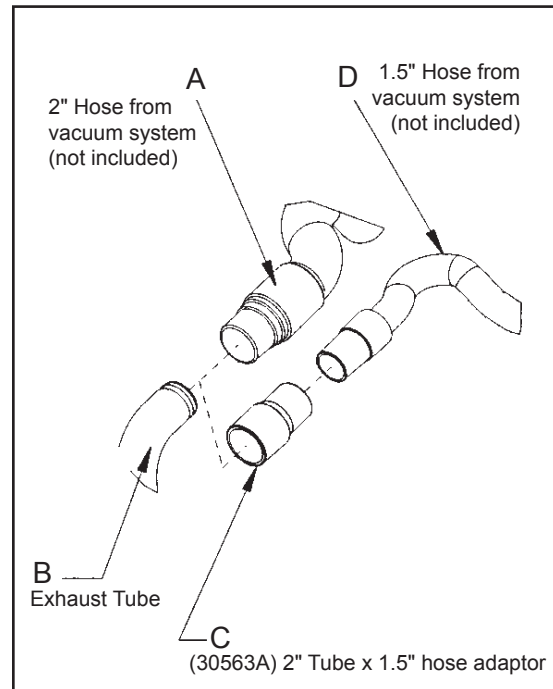


Figure 1

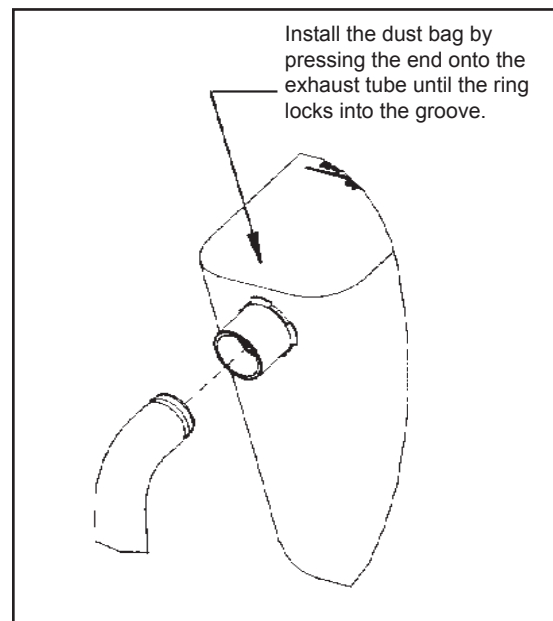


Figure 2

MACHINE SET-UP

To prepare the machine for use, follow this procedure:

1. Familiarize yourself with the machine. Read all danger, warning and caution statements and the Owner's Manual. If operator is unable to read English, have the manual explained before operating.
2. To install or replace abrasive, turn the machine upside down and let it rest on the motor cover. With the wrench supplied, remove the screw and abrasive retainer. Hold pad to prevent it from rotating and turn wrench. See figure 3.
3. Center abrasive on pad and install the abrasive retainer and screw. Tighten screw.
4. Return machine to upright position.

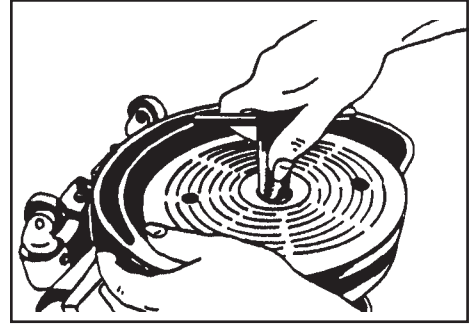


Figure 3

WARNING: Serious injury could occur when attempting to replace abrasive while machine is connected to power supply. Always disconnect power before installing abrasive.

CAUTION: Gearbox damage could result from machine resting upside down for extended periods of time. Lubricant may drain from gearbox. Always return machine to upright position after installing abrasive.

OPERATING INSTRUCTIONS

To operate the machine, follow this procedure:

1. Set any exposed nails with a hammer and punch to avoid encounter with sanding pad.
2. Connect the machine to an appropriately grounded and fused circuit (power supply).
3. Tilt the machine back so that the sanding pad does not contact the floor. Select cutting speed. Use high speed for fast stock removal. Use low speed for finish cuts and custom work. See figure 4 (A).
4. Depress and release the start/stop push button to start the machine. See figure 4 (B).
5. Gradually lower sanding pad to the floor. Make sure the machine is in motion while the sanding pad is engaged with the floor. Broad circular motions can be used as you sand along the length of the floor or you may use a combination of forward and sideway motions. In time you will develop your own technique to optimize coverage and dust control. It is advisable to not add effort to the pad as this may lead to "nosing" or "tipping" which produces grooves or lines on the floor.
6. When replacing abrasive; emptying the contents of the dust bag; or the sanding operation is completed, return the machine to the reclined position and flip the control switch to the off (O) position. Disconnect the machine from the power supply.
7. Empty dust bag whenever it becomes 1/3 full.

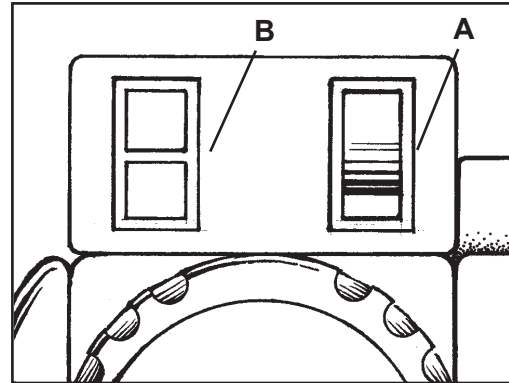


Figure 4

⚠ DANGER: Failure to disconnect the supply cable from machine whenever servicing, replacing abrasive, or emptying the dust bag could result in electrocution or severe injury. Never leave machine unattended while the supply cable is connected.

⚠ DANGER: Never leave dust bag unattended with sanding dust in it. Sanding dust can spontaneously ignite and cause a fire or explosion. Empty dust bag into a metal container, clear of any combustibles. Do not empty content into a fire. Do not over-fill dust bag.

SANDING CUTS AND SANDPAPER

Initial Cut

The purpose of the initial cut is to remove old finish and gross imperfections on the floor surface. A coarse abrasive should be used. If the surface is severely damaged by deep scratches, pre-existing dwell marks, uneven planks, etc., it may be necessary to sand across or diagonally to the grain to restore evenness to the surface. If these conditions are not present, the initial cut should be done in the direction of the grain.

If glazing, loading, or burning takes place immediately into an initial cut, select a coarser abrasive. If this should occur during an initial cut, the abrasive has dulled and must be replaced.

Final Cuts

The purpose of a finishing cut is to remove the scratches produced during the initial cut. Use a fine (60 - 80 grit) grain abrasive.

If the surface remains rough after a finishing cut, it may be necessary to use an even finer grain of abrasive (80 - 100 grit). Care should be taken in selecting the grit size of the abrasive. A very fine grain will close the pores on a wood floor making admission of a stain difficult.

If glazing or burning should occur immediately into a finishing cut, increase pace. If it should occur during a finishing cut, the abrasive has dulled and must be replaced.

MAINTENANCE

CAUTION: Maintenance and repairs performed by unauthorized personnel could result in damage or injury. Maintenance and repairs performed by unauthorized personnel will void your warranty. Servicing of these units must always be referred to an authorized Clarke American Sanders distributor.

The Dust Control System

Remove the dust from the bag when the bag is $\frac{1}{3}$ full or when the efficiency of the dust control system decreases.

If the exhaust pipe gets an obstruction, follow this procedure:

1. Remove the four screws that hold the exhaust pipe to the housing. See figure 5.
2. Remove the obstruction from the exhaust pipe.
3. Install the exhaust pipe.

How to Adjust the Angle Of The Sandpaper Disc To The Floor

The adjustment of the machine is correct when the front part of the sandpaper disc makes contact with the floor.

To change the adjustment of the machine, follow this procedure:

1. Using the special wrench, loosen the lock nut on each caster. See (1) figure 6.1.
2. Loosen the jam nut. See (2) figure 6.2.
3. Raise or lower the casters as needed.
4. Tighten the jam nut on each caster.
5. Tighten the lock nut on each caster.

The Ventilation Plug

1. To clean the ventilation opening in the center of the plug, remove the plug from the machine. With the plug removed, also inspect the grease in the gearbox. See figure 7.

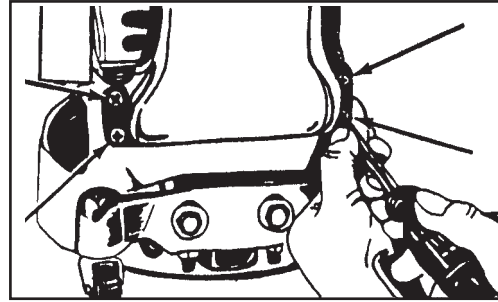


Figure 5

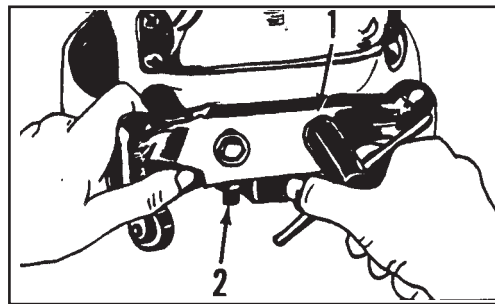


Figure 6



Figure 7

Lubrication

The machine is completely lubricated. The bearings and gears in the gear unit have enough lubricant for approximately six months of normal operation. All other bearings are sealed and have enough lubricant for the life of the machine. No lubricant is needed for the rotating disc guard.

How To Change The Lubricant In The Gearbox

To change the lubricant in the gearbox, follow this procedure:

1. Put the machine upside down on a bench.
2. Align one of the two holes in the rubber pad with one of the three holes in the rotating disc guard.
3. Align both holes with one of the three screws in the gear housing cover. Remove the screw from the gear housing cover. See figure 9.
4. Align the holes with each of the other two screws, then remove screws.

CAUTION: Make sure no dust enters the gear box. Damage could occur to the gear box.

5. Remove the cover from the gear housing.
6. Remove the old lubricant from the gearbox.
7. Add ten ounces of Clarke American Sanders lubricant to the gearbox.

CAUTION: To prevent damage to the motor, do not add more than ten ounces of lubricant to the gearbox.

8. Using the three screws removed above, install the cover on the gear housing.
9. Start the machine and let it run for 15 minutes. A small amount of excess lubricant should flow out the vent hole. If none appears it may be necessary to add additional lubricant.
10. Wipe off excess lubricant and clear vent hole.

How To Check The Carbon Brushes

Depending on use, a set of brushes can be expected to last 250 hours and should be inspected sometime prior to that time.

To check the brushes, follow this procedure:

1. Remove the motor cover. See figure 10.
2. Inspect the carbon brushes. Replace both brushes if either brush has worn to 3/8" in length, or is worn to the wear indicator. See figure 11.
3. To replace the brushes, disconnect the field wire (A) from the brush holder (B). Then remove the two screws and washers (C) securing the holder to the motor housing. See figure 12.

Lubricants

Qty	Part No.
1 Qt.	16610A
1 Gal.	16611A

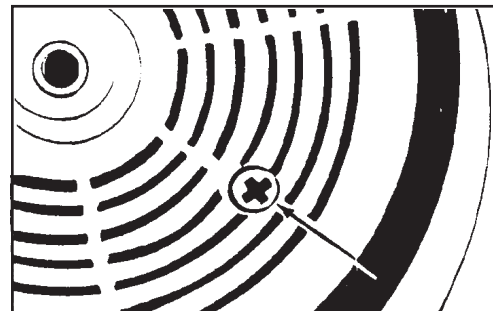


Figure 9

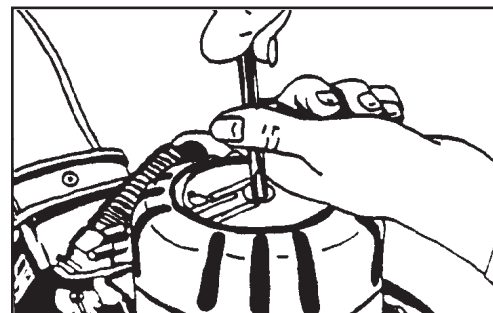


Figure 10

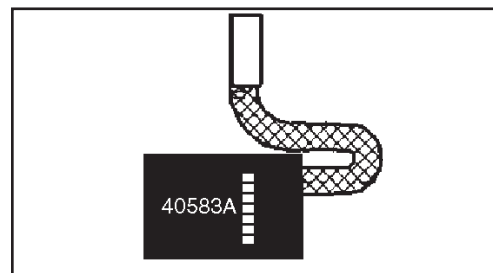


Figure 11

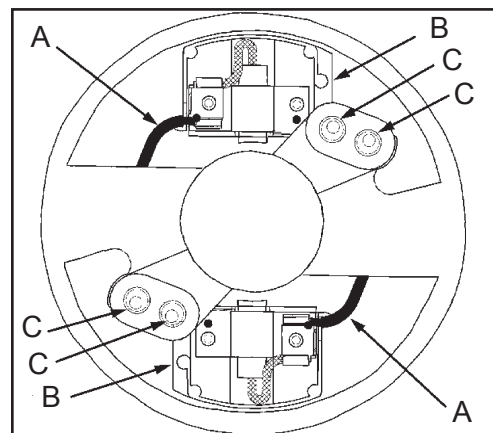


Figure 12

How To Check The Carbon Brushes (cont)

4. Gently pry the holder down from the motor housing.
5. Rotate holder from beneath the motor housing and lift out.
6. Disconnect the brush shunt wire from the holder. For convenience, cut the terminal from the shunt wire and remove brush.
7. To put in a new carbon brush, negotiate the terminal on the shunt wire by the spring and brush holder guide. Take care not to damage the spring. See figure 13.
8. Depress the brush into the guide and connect the shunt wire to the holder.
9. Depress the brush and insert the holder into the motor housing.
10. Rotate holder beneath motor housing. Relax brush against commutator.
11. Align posts on holder with holes in housing.
12. Gently pry the holder into the housing.
13. Reattach screws and washers.
14. Start up the machine, if sparking between either brush and the commutator occurs, use a brush seating stone on the commutator to promote full engagement between the brushes and commutator.
15. Install the motor cover.

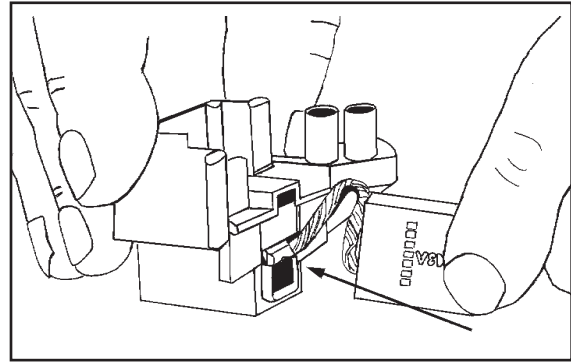


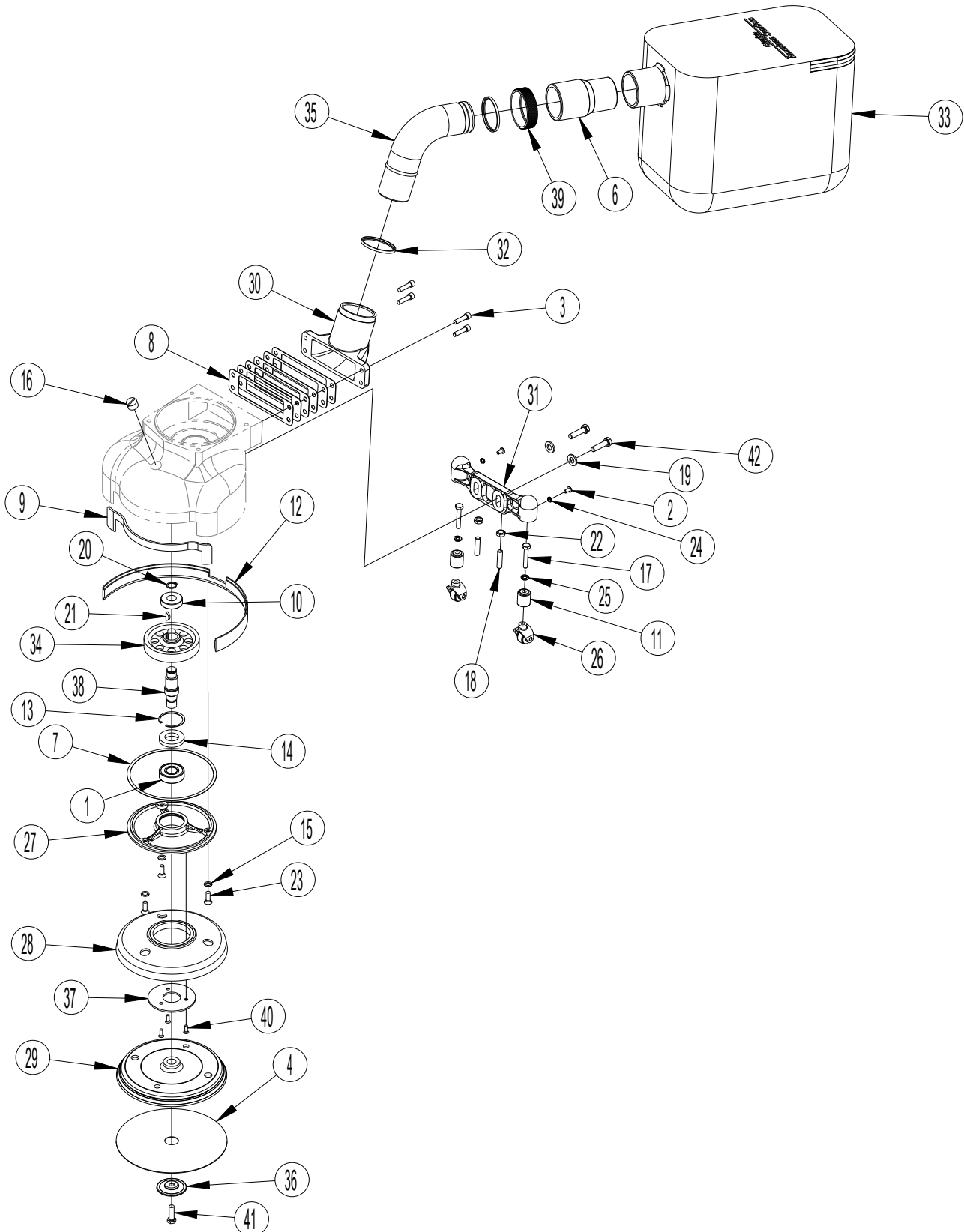
Figure 13

Clarke[®]
American Sanders[®]

B-2
7" Spinner
Edger (CE)
Section II
Parts Manual

(56042618)

LOWER ASSY

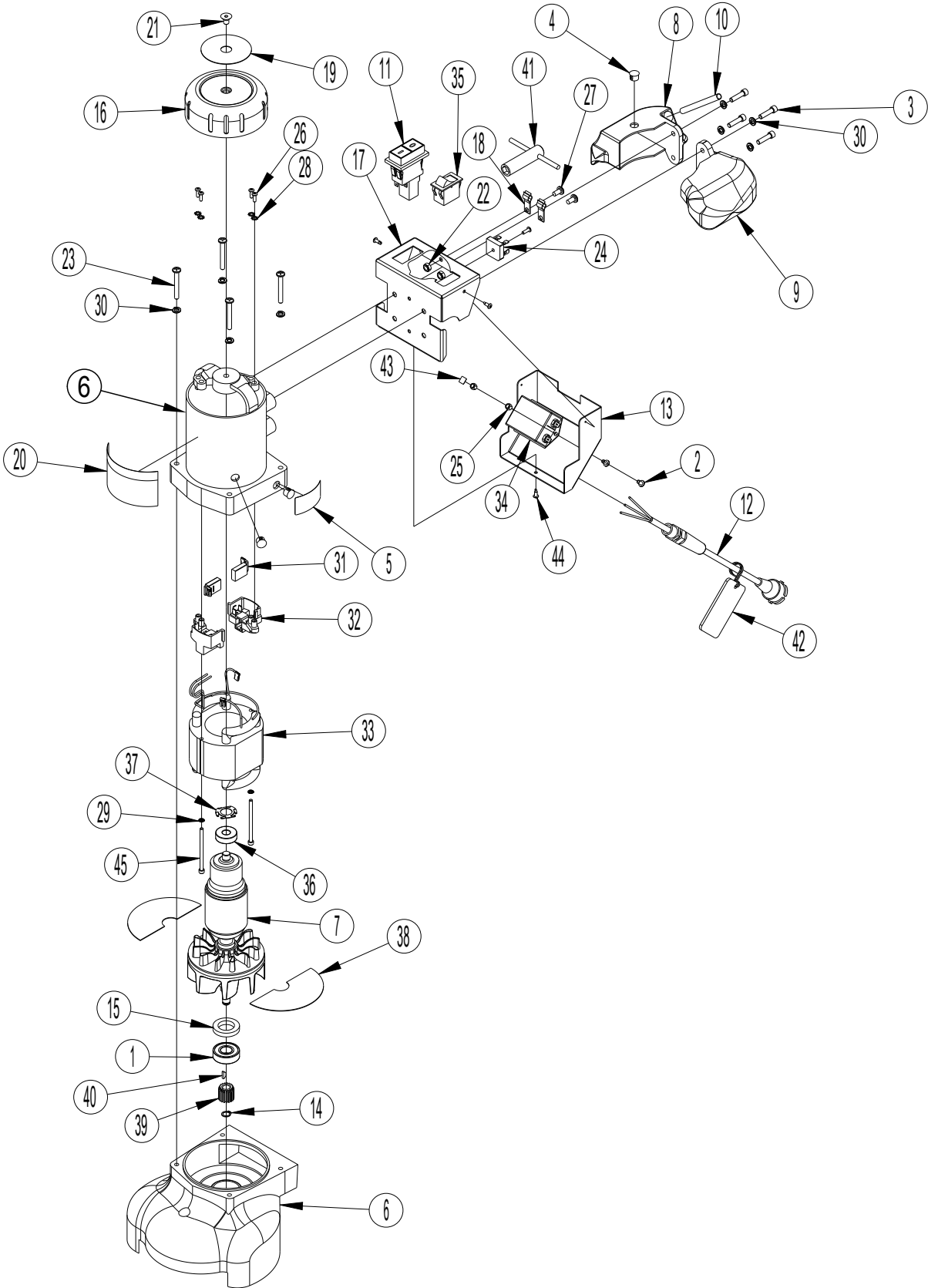


LOWER ASSY

Item	Ref. No.	Qty	Description
1	902550	1	Bearing Ball-6203
2	962015	2	Screw 10-24 X 3/8 Pn St Ph
3	962454	4	Scr 1/4 -20x1 Sc St Cap
4	56382755	1	Disc 7 Sanding 60 Cs=100
[5]	30050A	1	B-2 Ce Sander Case
6	30563A	1	2" X 1.50" Hose Adaptor
7	34232A	1	Gasket-Gear Case Cover
8	34233A	6	Gasket-Discharge Pipe
9	38103A	1	Seal-Dust
10	51127A	1	Bearing-Ballshield & Seal
11	51128A	2	Bearing-DbI Row Unground
12	52853A	1	Skirt B-2 Edger
13	57702A	1	Ring Retaining Internal
14	58114A	1	Seal-Shaft
15	59817A	3	Washerft.500x.317x.032nylon
16	66130A	1	Plug-Gear Hsg. Vent
17	85701A	2	Scr 1/4 -20x1&1/2 Hx St Cap
18	86203A	2	Scr 5/16-18x1&1/4 St St
19	87000A	2	Washer .39x.75x.09 Flat St
20	467308	1	Ring, Retainer 189
21	915028	1	Key, 1/8 X 5/8 Woodruff
22	920160	2	Nut, 5/16 Jam Hex
23	962098	3	Screw, 1/4-20 X 3/4 F.H.
24	980650	2	Washer, #10 Lock
25	980657	2	Washer, Lock 1/4
26	10212A	2	Wheel & Yoke Asm
27	12906A	1	Cover, Asm - Gear Case
28	15000A	1	Assembly, Roller Guard
29	21067A	1	Disc Sanding
30	21078A	1	Exhaust Adaptor
31	21106A	1	Bracket, Caster
32	30613A	2	Seal, Pipe
33	53544B	1	Bag, Edger
34	61568A	1	Gear, Drive, B2, (Rh)
35	61712A	1	Tube, Exhaust, B-2
36	62411A	1	Washer
37	66917A	1	Retainer-Roller Guard
38	67426A	1	Shaft-Gear
39	80276A	1	Nut-Slip Joint 2 X 2
40	84200A	3	Screw, 8-32 F.H.C.S
41	85715A	1	Screw, 5/16-18x1 Hx Hd
42	85814A	2	Screw 5/16-18 X 1 1/4 Hh

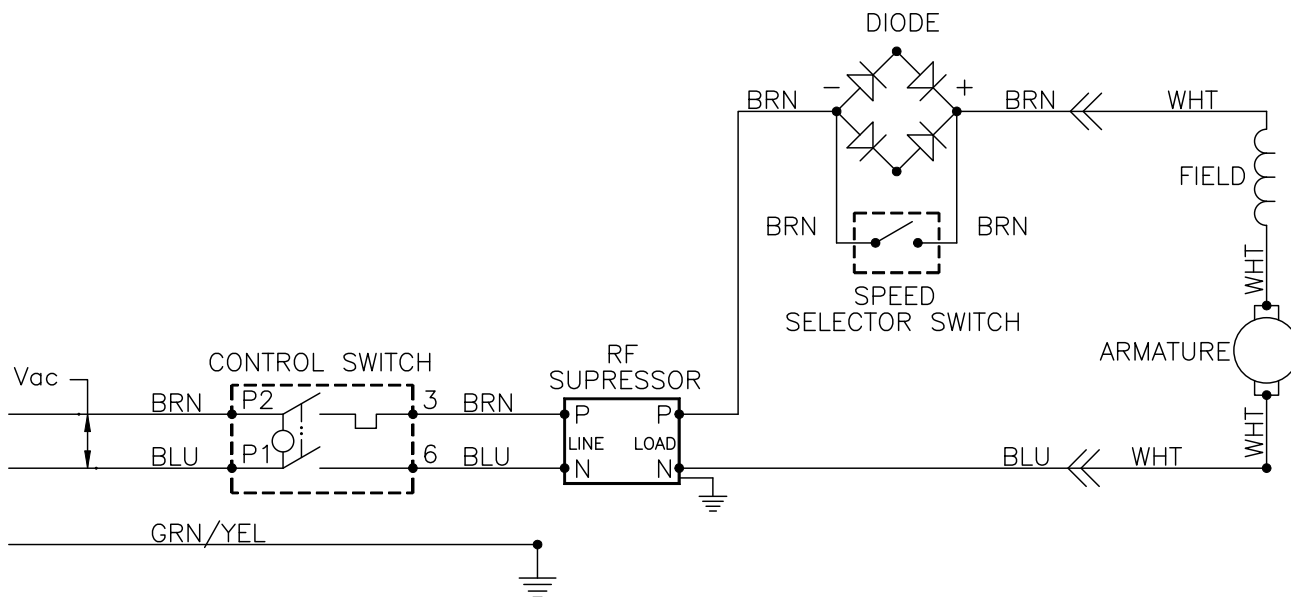
[] = Not Shown

UPPER ASSY



UPPER ASSY

Item	Ref. No.	Qty	Description
1	902550	1	Bearing Ball-6203
2	962015	2	Screw 10-24 X 3/8 Pn St Ph
3	962454	4	Scr 1/4 -20x1 Sc St Cap
4	56323560	3	Plug, Cap
5	56380216	1	Decal Power Tool Cautionary Ma
6	10080A	1	Housing Asm B-2+Ce
7	10112A	1	Armature & Fan Asm.. B-2
8	24302A	1	Handle-Right Hand
9	24303A	1	Handle-Left Hand
10	39305A	1	Tube-Insulation
11	40114A	1	Switch Pushbutton W/10a Ovld
12	40115A	1	Cordset Power W/Eu1-16p
13	50826A	1	Cover-Enclosure
14	57701A	1	Ring-Retaining
15	58113A	1	Sealoil-0.984 X 1.575 X 0.276
16	62009A	1	Cap Wldmtmr Hsg Uk B-2
17	62906A	1	Enclosurereley Uk B-2
18	64601A	2	Holder-Wrench
19	70686A	1	Platename B-2+ Cas
20	73285A	1	Label-Warning
21	80081A	1	Screw 5/16-24 X 1/2
22	81217A	2	Nut, 1/4-20 Hex Esna
23	85333A	4	Scr 1/4 -20x2 Pn St Mach
24	912287	1	Rectifier Full Wave 50a 600v
25	920296	2	Nut 10-24 Elastic Stop
26	962727	5	Screw, 8-32 X 1/2
27	962823	2	Screw, 1/4-20 X 1/2 P.H.
28	980603	4	Washer, #10 Lock External Tooth
29	980650	2	Washer, #10 Lock
30	980657	8	Washer, Lock 1/4
31	40583A	2	Brush, Carbon Terminated
32	40717A	2	Brush Holder
33	40719A	1	Field 240v
34	46739A	1	Rf Suppressor, 240v
35	47365A	1	Switch, Rocker
36	51126A	1	Bearing-Balldbl Seal 6201
37	58602A	1	Spring, Bearing
38	60800A	2	Baffle_Half
39	63701A	1	Gear, Pinion
40	65302A	1	Key Woodruff Special#3
41	68705A	1	Wrench-T-Handle, 1/2 In
42	70175A	1	Tag Warning
43	77094A	1	Label Ground Symbol
44	85520A	3	Screw8-00 X 1/2 Pan Hd Sd
45	86117A	2	Scr 10-24x3 Shms



WIRING DIAGRAM

Item	Ref. No.	Qty	Description
	40114A	1	Control Switch
	46739A	1	RF Suppressor
	912287	1	Diode
	47365A	1	Speed Selector Switch
	40719A	1	Field
	10112A	1	Armature

CLARKE AMERICAN SANDERS U.S. AND CANADA LIMITED WARRANTY

Amano Pioneer Eclipse, Inc. warrants to the original end user, each new machine, new accessories and genuine replacement parts against defects in material and workmanship under normal use and service. Our obligation under this warranty is limited to repair or replacement of the defective item at our factory or by an Authorized Service Center. Warranty coverage shall begin on the date of purchase by the original end user (as evidenced by your invoice from the factory or Authorized Dealer) or one (1) year from the date the machine was shipped from the factory, whichever is earlier. The warranty registration card must be completed and returned within 30 days of purchase. The warranty coverage period is specified below.

GROUP	Parts ^{1,2}	Labor ²
Big Machines (belt and drum)	1 year	1 year
Rotary Sanders	5 years	5 years
Dust Control Vacs ⁴	2 years	2 years
Edger, Orbital, 3DS	1 year	1 year
Power Booster	2 years	2 years
Accessories/Replacement Parts ³	90 Days	
EXCEPTIONS		
NOTES:		
1-Parts repaired or replaced are guaranteed for the remainder of the original machine warranty period.		
2-Coverage only applicable to products sold and used in the United States and Canada.		
3-Applies to replacement parts only after machine warranty coverage has expired.		
4-Backplates on are warranted for the life of the machine		

This warranty shall not apply to repairs resulting from accidents or misuse, damage in transit, overloading the capacity of the machine, failure due to lack of proper maintenance or care as described in the operating and maintenance instructions. Minor adjustments, such as tightening of screws or bolts not connected with the replacement of parts, are not covered. Replacement of expendable wear items such as scrub brushes, pad holders, carbon motor brushes, bulbs, bags, filters and various rubber/plastic parts are also not covered. Repairs or alterations by an organization other than the factory or an Authorized Service Center are not covered and will void any Amano Pioneer Eclipse, Inc. warranty as to the parts or systems repaired or altered by a non-authorized organization.

THERE ARE NO WARRANTIES THAT EXTEND BEYOND THE DESCRIPTION OF THE LIMITED WARRANTIES STATED WITHIN. NO OTHER WARRANTY, EXPRESSED OR IMPLIED, INCLUDING BUT NOT LIMITED TO ANY IMPLIED WARRANTY OF MERCHANTABILITY OR FITNESS FOR A PARTICULAR PURPOSE, IS MADE EXCEPT AS EXPRESSLY STATED HEREIN. ANY STATUTORY IMPLIED WARRANTIES, INCLUDING ANY WARRANTY OF MERCHANTABILITY OR FITNESS FOR A PARTICULAR PURPOSE, THAT ARE IMPOSED BY LAW DESPITE THE EXPRESS LIMITATION OR WARRANTIES ABOVE, ARE EXPRESSLY LIMITED TO THE DURATION OF THE WRITTEN WARRANTY. BUYER UNDERSTANDS, ACKNOWLEDGES AND AGREES THAT THE REMEDIES PROVIDED UNDER THIS LIMITED WARRANTY ARE THE SOLE AND EXCLUSIVE REMEDIES AVAILABLE TO THE BUYER. AMANO PIONEER ECLIPSE, INC. WILL NOT BE LIABLE FOR ANY OTHER OR ADDITIONAL DAMAGES, INCLUDING BUT NOT LIMITED TO INDIRECT, SPECIAL OR CONSEQUENTIAL DAMAGES ARISING OUT OF OR IN CONNECTION WITH THE FURNISHING, PERFORMANCE, USE OF OR INABILITY TO USE THE MACHINE. ANY EXTENSIONS OF OR MODIFICATIONS MADE TO THIS WARRANTY BY A DEALER/DISTRIBUTOR OF Amano Pioneer Eclipse, INC. ARE THE SOLE RESPONSIBILITY OF THE DEALER/DISTRIBUTOR.

All transportation or shipping charges resulting from the return of machines, parts, or accessories shall be the responsibility of the end-user. When returning, please provide an explanation of the problem and include the serial number of the machine as well as the name of the selling organization. The Technical Service department of the authorized Dealer Service Center or the factory will investigate and then contact you.

Transportation of hazardous waste or contaminated equipment is subject to various laws and regulations. In returning machines, parts, or accessories under this limited warranty, the end user must certify in writing that the machines, parts or accessories being returned have not been used for handling, clean up, or disposal of hazardous waste or hazardous materials including but not limited to such things as asbestos, anthrax etc. or if the machines, parts or accessories being returned have been used for handling, clean up, or disposal of hazardous waste or hazardous materials, then the end user must have the machines, parts or accessories decontaminated by licensed and qualified decontamination professionals and provide written certification of this decontamination signed by the decontamination professionals. These machines, parts or accessories are to be returned only to the local Amano Pioneer Eclipse, Inc. Authorized Service Center for Warranty service along with decontamination certification.

Amano Pioneer Eclipse, INC. Reserves the right to change its warranty policy without notice.

Clarke®
American Sanders®

Amano Pioneer Eclipse
1 Eclipse Rd
Sparta, NC 28675
336-372-8080
800-334-2246

www.pioneereclipse.com
www.americansanders.com