



PALLMANN®

wood floors. protected

Triple Disc #81696

Maintenance Care and Adjustment



Instructions #89195



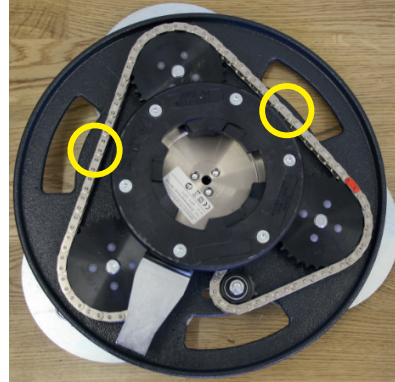
PALLMANN®

wood floors. protected

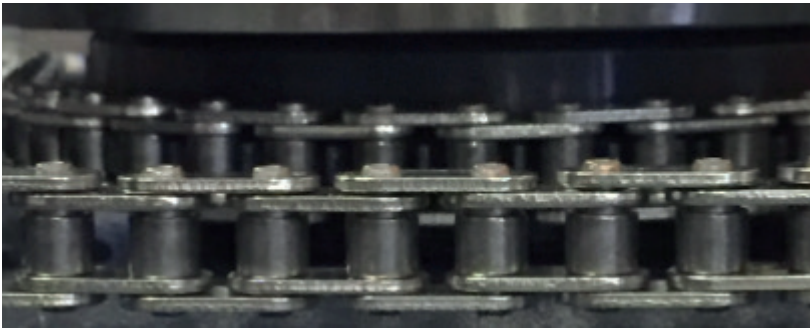
Check and adjust the chain tension

Check points of the chain tension on the triple-disc

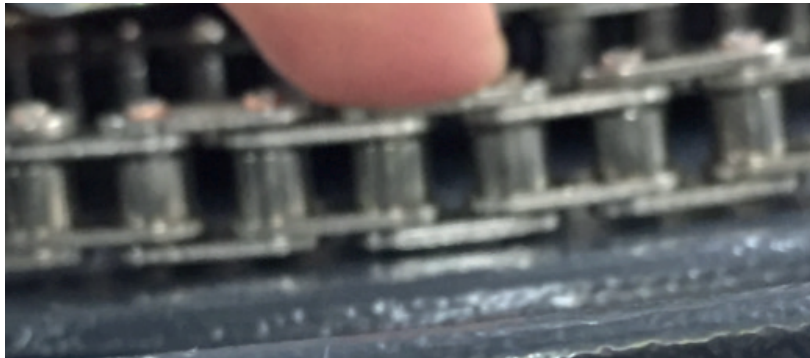
The chain must be tightened if any of the following apply



1. The chain hangs in horizontal position half deeper as the chain the background.



2. The chain touches the Triple-Disc without pressure.



3. The chain can be stretched over the inner circle of the Triple Disc.



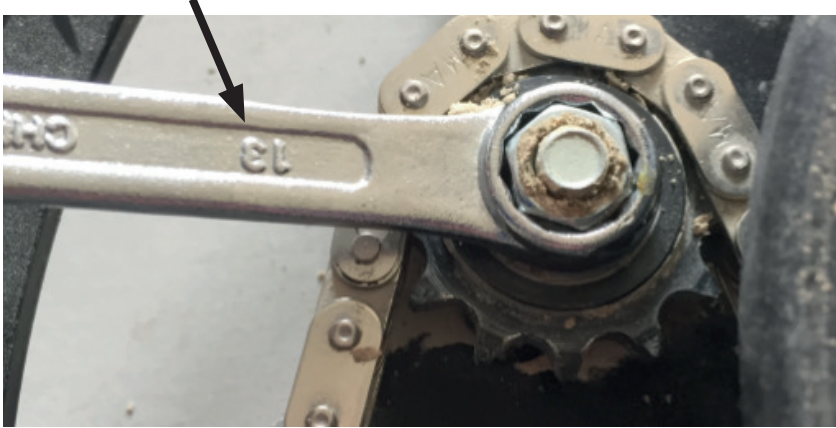


PALLMANN®

wood floors. protected

Adjustment and chain tension

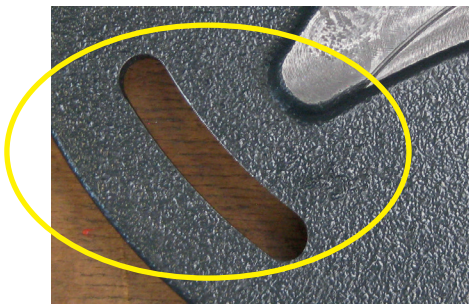
4. Use the 13 mm wrench to loosen the nut from the chain tensioner.



5. Pull the chain tensioning wheel outwards and tighten the nut with the wrench.



6. Check chain tension, if tension is too weak, repeat procedure.
7. If you can not stretch the chain enough, there is the possibility that chain tensioning wheel is present at the edge of the recess.



In this case, the chain must be replaced and the Triple Disc must be serviced.



PALLMANN®

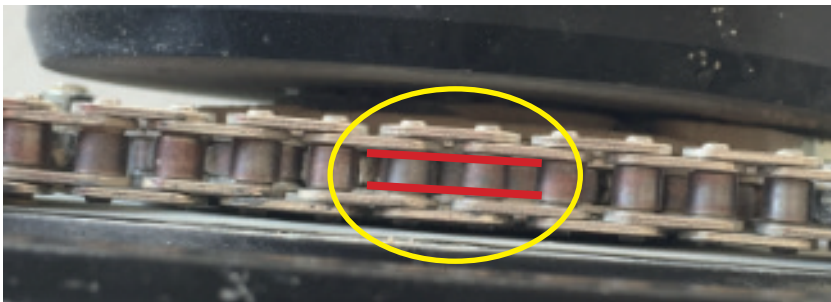
wood floors. protected

Optimum chain tension:

Triple Disc 81696.



Play between chain and base disc.





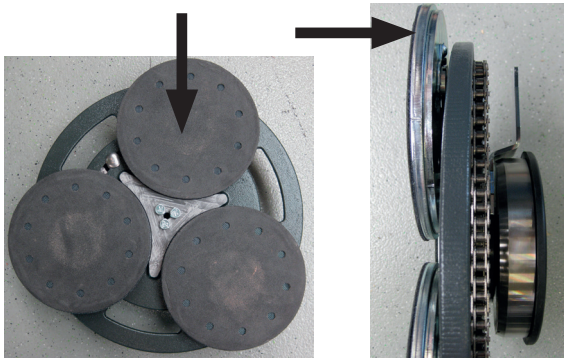
PALLMANN®

wood floors. protected

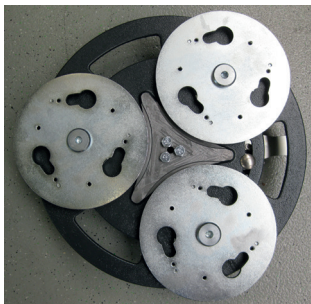
Maintenance Triple-Disc

Daily maintenance Triple-Disc

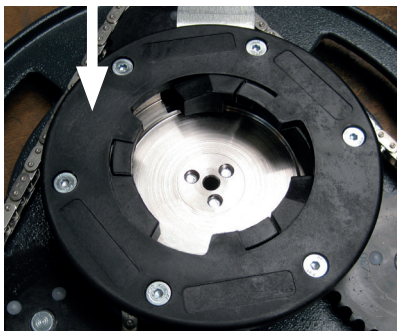
Remove **satellite discs**, vacuum and clean with compressed air.
(Wear protective goggles and dust mask)



Clean complete **Triple Disc** with compressed air or clean with a damp cloth.
(wear safety goggles and wear a dust mask)



Check **clutch** for damage or heavy contamination.



Check screws to see if screws have loosened.

Check chain tension and retighten if necessary.



PALLMANN®

wood floors. protected

Weekly maintenance

Triple Disc Plate

- Perform daily maintenance and cleaning as described above.
- Check satellite discs for play. (With large clearance, a service is required).

Attention!

Never leave the machine on the Triple-Disc! Remove the disc or place the machine on the wheels and the rubber plate, this prevents damage to the Triple-Disc plate and the pads.





PALLMANN®

wood floors. protected

Warranty

The warranty period for new Pallmann machines shall last for one year from the point at which the machine is transferred/delivered to the customer, insofar as statutory legal requirements do not stipulate otherwise.

When validating warranty claims, the invoice or proof of purchase must always be submitted. All repairs within the framework of the warranty agreement must be undertaken by a service center that has been accredited by us..

Replacement of parts, accessories and other modifications to Pallmann machines

Users of Pallmann machines enjoy a high level of safety and reliability of their machine. In order to maintain this status quo, your Pallmann tool may not be modified from the condition in which it is delivered without following the rules below.

These rules apply to both the replacement of parts and equipping the machine with accessories as well as other technical modifications.

- All work undertaken to your Pallmann machine must be undertaken exclusively by a workshop that has suitably trained and experienced personnel at its disposal, as well as the requisite work equipment. We recommend using authorised service center.
- In the event of planned replacement of parts, planned addition of accessories or other planned technical modifications, an assessment must always be carried out by an authorised service Centre or us, as manufacturer, before work is commenced.
- It is highly recommend that only safety-approved Original Pallmann replacement parts and Original Pallmann accessories are used, which have been approved by us, as manufacturer.

Replacement parts and accessories can be obtained from your authorised service center, which will also be able to undertake professional installation on your behalf. Original Pallmann replacement parts and Original Pallmann accessories have been checked for safety and suitability especially for Pallmann machines.

We are unable to adequately assess the safety and suitability of non-Original Pallmann replacement parts.

- In order to preserve operational safety and to prevent damage in the event of technical modifications, of whatsoever nature, our technical guidelines must always be observed. We are also always happy to hear from you should you have any other questions about your Pallmann machine.

Please note that we cannot accept any liability for damage, insofar as this is sustained as the result of incorrect work undertaken or as the result of violation of the rules stated above.